

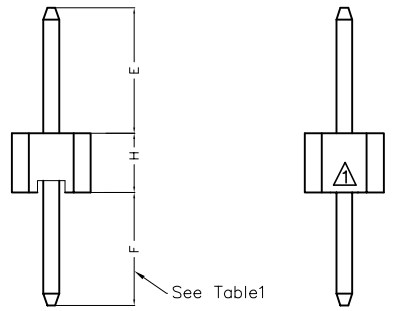
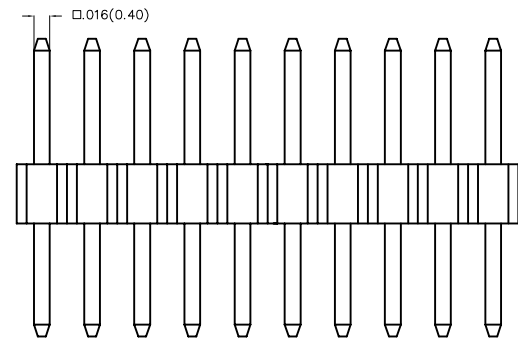
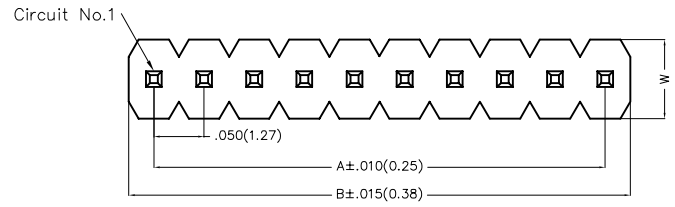
Dimensions(in/mm)	
H	W
.039(1.00)	.079(2.00)
.059(1.50)	
.079(2.00)	.098(2.50)
.098(2.50)	

REV	LOCATIONS	DESCRIPTION	DATE	REVISER	APPD
1	△	Structure of Housing change	08/MAR/23	MATT	KATE

SPECIFICATIONS

Electrical
 Current Rating:1.0A AC(rms)/DC
 Voltage Rating:250V AC(rms)/DC
 Contact Resistance:20 mΩ Max
 Insulation Resistance:1000 MΩ Min
 Withstanding Voltage:600V AC r.m.s
 Temperature Range-Operating: -40°C~+105°C

Material and Plating
 Housing:Glass Filled Polyester (UL 94V-0), Color: Black
 Pin:Brass
 Pin Plating: Gold plated/ Selective gold plated on contact area and 120μ" Min. matte tin plated on tails area

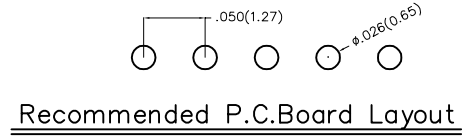



H≤.059(1.50)

Ordering Information

FPH 127 28 - S XX S X XX X XX XX X 0 B
 1 2 3 4 5 6 7 8 9 10 11 12 13

1 Category FPH-Pin Header	2 Series Number 127-Pitch1.27mm	3 Distinction No. 28	4 Row Option S-Single Row	5 Circuits XX	6 Entry Angle S-180° Vertical	7 Plating 1-Gold plated 7-Selective gold plated on contact area and matte tin plated on tails area
8 Thickness of Plating 01-1μ" 15-15μ" Custom plate available	9 Material-Resin 4-PA6T 5-PA9T	10 E Size 01,02...-Serial number (See Table1)	11 F Size 01,02...-Serial number (See Table1)	12 H Size 1,2...-Serial number (See Table1)	13 Packaging B-PE Bag	



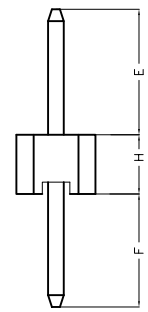
THIRD ANGLE PROJECTION	GENERAL TOLERANCES (UNLESS SPECIFIED)		APPROVE BY FRANK	DATE 16/DEC/19	PART NO. FPH12728-SXXSXXXXXXXXX0B	ITEM NO. FPH12728	 Leader Of Industry
	DESIGN UNITS Inch (metric)	X.±.012(0.30)	X:±5'	CHECKED BY CHERRY	DATE 16/DEC/19	TITLE Board to Board(Pin Header) Pitch 1.27mm 180° Vertical(DIP)	
SCALE 5:1	SIZE A4	X.XX±.006(0.15)	.XX'±1'	DRAWN BY ZOEY	DATE 16/DEC/19	THIS DRAWING CONTAINS INFORMATION THAT IS PROPRIETARY TO TXGA INDUSTRIAL ELECTRONICS(S.Z)CO.,LTD AND SHOULD NOT BE USED WITHOUT WRITTEN PERMISSION	
		X.XXX±.004(0.10)	.XXX'±0.5'				

REV	LOCATIONS	DESCRIPTION	DATE	REVISER	APPD

A Table1

Serial number	Dimensions(in/mm) E	Serial number	Dimensions(in/mm) E
01	.059(1.50)	19	.236(6.00)
02	.069(1.75)	20	.246(6.25)
03	.079(2.00)	21	.256(6.50)
04	.089(2.25)	22	.266(6.75)
05	.098(2.50)	23	.276(7.00)
06	.108(2.75)	24	.285(7.25)
07	.118(3.00)	25	.295(7.50)
08	.128(3.25)	26	.305(7.75)
09	.138(3.50)	27	.315(8.00)
10	.148(3.75)	28	.325(8.25)
11	.157(4.00)	29	.335(8.50)
12	.167(4.25)	30	.344(8.75)
13	.177(4.50)	31	.354(9.00)
14	.187(4.75)	32	.364(9.25)
15	.197(5.00)	33	.374(9.50)
16	.207(5.25)	34	.384(9.75)
17	.217(5.50)	35	.394(10.00)
18	.226(5.75)		

Serial number	Dimensions(in/mm) F	Serial number	Dimensions(in/mm) F
01	.059(1.50)	21	.256(6.50)
02	.069(1.75)	22	.266(6.75)
03	.079(2.00)	23	.276(7.00)
04	.089(2.25)	24	.285(7.25)
05	.098(2.50)	25	.295(7.50)
06	.108(2.75)	26	.305(7.75)
07	.118(3.00)	27	.315(8.00)
08	.128(3.25)	28	.325(8.25)
09	.138(3.50)	29	.335(8.50)
10	.148(3.75)	30	.344(8.75)
11	.157(4.00)	31	.354(9.00)
12	.167(4.25)	32	.364(9.25)
13	.177(4.50)	33	.374(9.50)
14	.187(4.75)	34	.384(9.75)
15	.197(5.00)	35	.394(10.00)
16	.207(5.25)	36	.030(0.75)
17	.217(5.50)	37	.039(1.00)
18	.226(5.75)	38	.049(1.25)
19	.236(6.00)		
20	.246(6.25)		



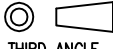

Serial number	Dimensions(in/mm) H
1	.039(1.00)
2	.059(1.50)
3	.079(2.00)
4	.098(2.50)

F

<p>THIRD ANGLE PROJECTION</p>	GENERAL TOLERANCES (UNLESS SPECIFIED)		APPROVE BY FRANK	DATE 16/DEC/19	PART NO. FPH12728-SXXSXXXXXXXXX0B	ITEM NO. FPH12728	<p>Leader Of Industry</p>	
	DESIGN UNITS Inch (metric)	X.±.012(0.30) X.X±.008(0.20)	X:±5' .X'±2'	CHECKED BY CHERRY	DATE 16/DEC/19	TITLE Board to Board(Pin Header) Pitch 1.27mm 180° Vertical(DIP)		REV 1
	SCALE 5:1	SIZE A4	X.XX±.006(0.15) X.XXX±.004(0.10)	DRAWN BY ZOEY	DATE 16/DEC/19	THIS DRAWING CONTAINS INFORMATION THAT IS PROPRIETARY TO TXGA INDUSTRIAL ELECTRONICS(S.Z)CO.,LTD AND SHOULD NOT BE USED WITHOUT WRITTEN PERMISSION		

REV	LOCATIONS	DESCRIPTION	DATE	REVISER	APPD

Circuits (n)	Part No.	Dimensions(in/mm)		Circuits (n)	Part No.	Dimensions(in/mm)	
		A	B			A	B
1	FPH12728-S01SXXXXXXXXX0B	—	.050(1.27)	22	FPH12728-S22SXXXXXXXXX0B	1.050(26.67)	1.100(27.94)
2	FPH12728-S02SXXXXXXXXX0B	.050(1.27)	.100(2.54)	23	FPH12728-S23SXXXXXXXXX0B	1.100(27.94)	1.150(29.21)
3	FPH12728-S03SXXXXXXXXX0B	.100(2.54)	.150(3.81)	24	FPH12728-S24SXXXXXXXXX0B	1.150(29.21)	1.200(30.48)
4	FPH12728-S04SXXXXXXXXX0B	.150(3.81)	.200(5.08)	25	FPH12728-S25SXXXXXXXXX0B	1.200(30.48)	1.250(31.75)
5	FPH12728-S05SXXXXXXXXX0B	.200(5.08)	.250(6.35)	26	FPH12728-S26SXXXXXXXXX0B	1.250(31.75)	1.300(33.02)
6	FPH12728-S06SXXXXXXXXX0B	.250(6.35)	.300(7.62)	27	FPH12728-S27SXXXXXXXXX0B	1.300(33.02)	1.350(34.29)
7	FPH12728-S07SXXXXXXXXX0B	.300(7.62)	.350(8.89)	28	FPH12728-S28SXXXXXXXXX0B	1.350(34.29)	1.400(35.56)
8	FPH12728-S08SXXXXXXXXX0B	.350(8.89)	.400(10.16)	29	FPH12728-S29SXXXXXXXXX0B	1.400(35.56)	1.450(36.83)
9	FPH12728-S09SXXXXXXXXX0B	.400(10.16)	.450(11.43)	30	FPH12728-S30SXXXXXXXXX0B	1.450(36.83)	1.500(38.10)
10	FPH12728-S10SXXXXXXXXX0B	.450(11.43)	.500(12.70)	31	FPH12728-S31SXXXXXXXXX0B	1.500(38.10)	1.550(39.37)
11	FPH12728-S11SXXXXXXXXX0B	.500(12.70)	.550(13.97)	32	FPH12728-S32SXXXXXXXXX0B	1.550(39.37)	1.600(40.64)
12	FPH12728-S12SXXXXXXXXX0B	.550(13.97)	.600(15.24)	33	FPH12728-S33SXXXXXXXXX0B	1.600(40.64)	1.650(41.91)
13	FPH12728-S13SXXXXXXXXX0B	.600(15.24)	.650(16.51)	34	FPH12728-S34SXXXXXXXXX0B	1.650(41.91)	1.700(43.18)
14	FPH12728-S14SXXXXXXXXX0B	.650(16.51)	.700(17.78)	35	FPH12728-S35SXXXXXXXXX0B	1.700(43.18)	1.750(44.45)
15	FPH12728-S15SXXXXXXXXX0B	.700(17.78)	.750(19.05)	36	FPH12728-S36SXXXXXXXXX0B	1.750(44.45)	1.800(45.72)
16	FPH12728-S16SXXXXXXXXX0B	.750(19.05)	.800(20.32)	37	FPH12728-S37SXXXXXXXXX0B	1.800(45.72)	1.850(46.99)
17	FPH12728-S17SXXXXXXXXX0B	.800(20.32)	.850(21.59)	38	FPH12728-S38SXXXXXXXXX0B	1.850(46.99)	1.900(48.26)
18	FPH12728-S18SXXXXXXXXX0B	.850(21.59)	.900(22.86)	39	FPH12728-S39SXXXXXXXXX0B	1.900(48.26)	1.950(49.53)
19	FPH12728-S19SXXXXXXXXX0B	.900(22.86)	.950(24.13)	40	FPH12728-S40SXXXXXXXXX0B	1.950(49.53)	2.000(50.80)
20	FPH12728-S20SXXXXXXXXX0B	.950(24.13)	1.00(25.40)	50	FPH12728-S50SXXXXXXXXX0B	2.450(62.23)	2.500(63.50)
21	FPH12728-S21SXXXXXXXXX0B	1.000(25.40)	1.050(26.67)				

 THIRD ANGLE PROJECTION	GENERAL TOLERANCES (UNLESS SPECIFIED)		APPROVE BY FRANK	DATE 16/DEC/19	PART NO. FPH12728-SXXSXXXXXXXXX0B	ITEM NO. FPH12728	 Leader Of Industry	
	DESIGN UNITS Inch (metric)	X.±.012(0.30)	X:±5'	CHECKED BY CHERRY	DATE 16/DEC/19	TITLE Board to Board(Pin Header) Pitch 1.27mm 180° Vertical(DIP)		
		X.XX±.008(0.20)	.X'±2'	DRAWN BY ZOEY	DATE 16/DEC/19	REV 1		SHEET NO. 3/3
		SCALE 5:1	SIZE A4	X.XX±.006(0.15)	.XX'±1'	THIS DRAWING CONTAINS INFORMATION THAT IS PROPRIETARY TO TXGA INDUSTRIAL ELECTRONICS(S.Z)CO.,LTD AND SHOULD NOT BE USED WITHOUT WRITTEN PERMISSION		
	X.XXX±.004(0.10)	.XXX'±0.5'						